



Technical Information

- Performance**
 - Flow rate up to approx. 90,000 l/h
 - Operation pressure up to 15 bar
 - Suction head up to 9 mWC

■ Design
 - Easy stock-keeping and spares inventory due to standardized sizes
 - Screw-type mounting foot for horizontal and vertical installation
 - Flow direction: left↔ right, up↔ down

■ Temperature Resistance
 - Up to 95°C
 - Optional up to 150°C
- Product Viscosity**
 - Up to 300,000 mPas

■ Colors
 - Munsell 7.5 GY 9/2
 - Further RAL-lacquer coatings on request

■ Connections (Suction and Pressure Side)
 - Threaded connection (DN) DIN 11851 (standard)
 - Aseptic flange DIN 11864-2
 - Aseptic threaded connection DIN 11864-1
 - Tri-Clamp ISO 2852
 - SMS
 - Further connection types on request
- Materials**
 - Pump housing and cover: stainless steel (1.4571/AISI 316)
 - Double blade rotors of patented alloy

■ Materials of Mechanical Shaft Seals
 - Carbon/ceramics
 - Tungsten carbide
 - Silicon carbide
 - Further materials on request

■ Sealing Materials of O-rings
 - Viton
 - EPDM
 - Further materials on request

JM/JMU Series

sizes	2	4	10	16	25	40	55	125	160	200	300
max. rpm [min-1]	800	800	800	600	450	450	450	450	450	450	450
max. pressure [bar]	5	7	15	15	15	15	15	15	15	15	15
max. feeding capacity [l/min]*	8	20	40	60	100	135	270	410	710	930	1,470
liter/rotation	0.01	0.025	0.05	0.1	0.22	0.3	0.6	0.92	1.58	2.06	3.27
size connections [DN]	25	25	40	40	40	50	50	65	100	100	150
max. feeding capacity [l/h]*	480	1,200	2,400	3,600	6,000	8,100	16,200	24,600	42,660	55,800	88,200

* based on water without counter pressure, i.e. approx. 1 mPas/0 bar



Options



Single Blade Rotor



Vertical Installation



Rectangular Inlet



Jacket



Vented Cover



Nickel Coating



Pump Unit with Motor and Base



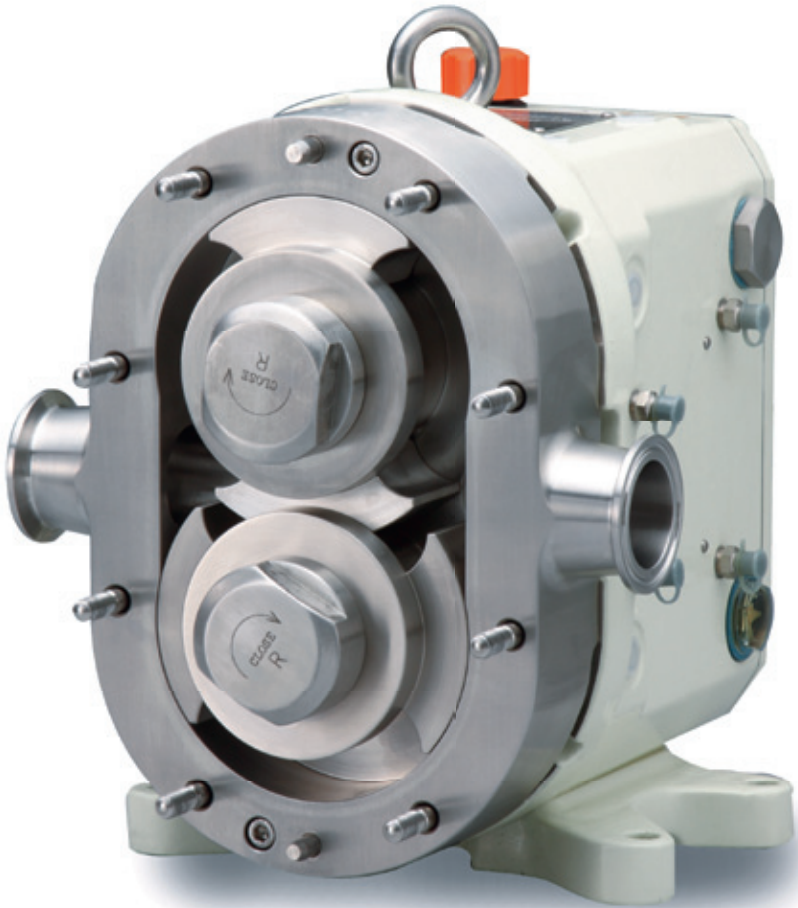
EHEDG Certification



Numerous Other Options



—Rotary Piston Pumps—



- Dairy


- Purées & Sauces


- Confectionery


- Beverages


- Bakery


- Meat Products


- Aseptic Production


- Cosmetics


- Chemicals


- Pharmaceuticals


- Others



Outstanding Quality & Performance



Made in Japan

www.nakakin.eu

Contact:
Nakakin Co., Ltd.
2-10-5 Kasuga Kitamachi
Hirakata Osaka 573-0137
Japan

E-mail: info@nakakin.eu

Nakakin Co., Ltd. Europe Office
Mergenthalerallee 77
65760 Eschborn
Germany

Internet: www.nakakin.eu



Rotary Piston Pumps

Our record of high performance and quality speaks for itself.
Finding solutions for all your liquid distribution needs.

Technology & Confidence since 1950

Nakakin began its operations in 1950 as a manufacturer of wooden patterns and cast dies. To this day, we utilize our technological expertise to manufacture products that require the utmost precision such as automobile engine parts. Nakakin has supplied engine parts such as manifolds to major car companies such as Mitsubishi Motors, Toyota, Suzuki, and so on.

Using this technology, we manufacture our pumps from the raw material stage. This means that we have full control over all stages of production right from the start. We monitor both the production and assembly of our pumps, ensuring the highest quality standards. We continue to stay ahead of our competitors through our original manufacturing techniques and specially developed materials such as Nakamura Metal No. 3.

We currently hold the top position in the Japanese market and export a number of pumps to locations throughout the world. Nakakin continues to advance with our vision to always deliver "Technology & Confidence".



Nakamura Metal No. 3

Nakamura Metal No. 3 is a unique product that we developed using our advanced molding technology. It is a special alloy that has minimum expansion even under high temperatures.



Smallest clearance

Our pumps are constructed as "non-contact structure pumps". There are no touching parts in the pump's wetted area. The pumps
... provide an excellent capability to convey a constant volume of liquid.
... are self-priming. They can be even used for vacuum pumping.
... allow for the distribution of liquids of all different levels of viscosity.
... have a maximum discharge pressure of 15 bar.



High degree of cleanability

Can be completely cleaned with a CIP (Cleaning In Place) system!
No need to do time-consuming COP (Cleaning Out Of Place).
The pump's wetted parts are easy to disassemble.



Our Series



JM/JO Series

Our standard with inside seal (JM = mechanical seal, JO = O-ring seal). A large number of variations available.



JMU Series

Our pump with outside mechanical seal represents an improvement in anti-corrosion and anti-slurry properties.



SC Series

This pump allows for easiest cleaning without any liquid residues.



AMXN Series

The double-layered structure with steam barriers prevents contamination from external air. A series that is compatible with aseptic lines.