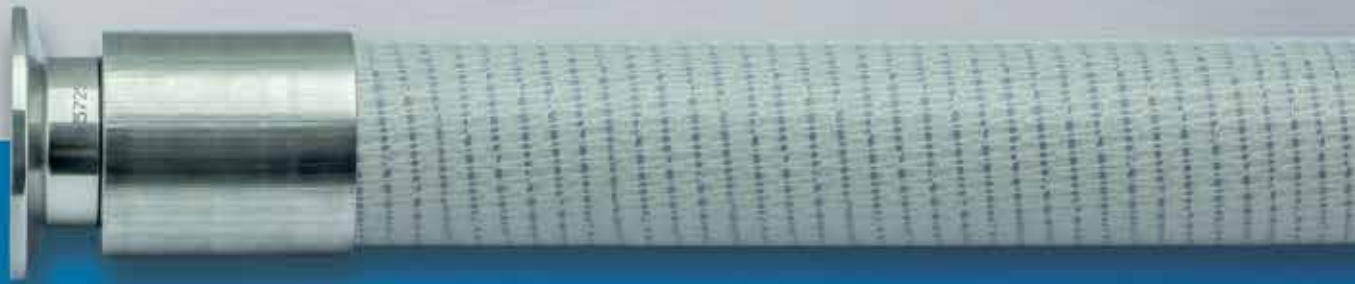


NEW

**D-ECKWEILER**

TUBE SYSTEMS IN STAINLESS STEEL



# PHARMACEUTICAL HOSES IN SILICONE, EPDM AND PFA

For applications in the pharmaceutical  
and biotech industries.

# CONNECT THE WAY YOU WANT.

## The flexible Dockweiler connection that connects seamlessly.

As a manufacturer of high purity stainless steel tube systems, Dockweiler has been familiar with the requirements of the pharmaceutical industry for decades. Having added a new range of elastomeric and thermoplastic hoses, we are now able to offer our customers complete hose systems as a one-stop provider.

As always, these products meet the well known Dockweiler quality standards.

### The advantages at a glance:

- Dockweiler supplies all hose systems as a one-stop provider, ensuring that your particular system is optimally configured.
- All hoses and fittings are made of high-quality materials.
- Full traceability across all stages of manufacture.
- High quality crimping that minimizes gaps.
- Manufactured in accordance with DIN 11854 and ASME BPE 2016.
- The hoses are freely configurable, i.e. the fittings can be combined with the hoses as desired.
- Fast processing and delivery.

### Available hose types:

- 1 MVQ1** – platinum-cured silicone, braid-reinforced
- 2 MVQ2** – platinum-cured silicone, braid-reinforced with stainless steel wire reinforcement
- 3 PFA1** – PFA liner (white), braid-reinforced with stainless steel wire reinforcement, outside platinum-cured silicone
- 4 EPDM** – braid-reinforced, with stainless steel wire reinforcement, outside blue EPDM, inside food-grade white EPDM

### Available connections:

- A TriClamp connections** in accordance with DIN 32676 and ASME BPE 2016  
Materials: 1.4404 / UNS S61303 (316L), optionally 1.4435 / UNS S61303 (316L)
- B Welding ends** for orbital welding. Material: 1.4435 / UNS S61303 (316L)
- C ZeroCon® connection with no dead space** Material: 1.4435 / UNS S61303 (316L)
- D Aseptic connections** in accordance with DIN 11864 Form A, all versions. Material: 1.4435 / UNS S61303 (316L)

Inner surface roughness  $\leq 0.8\mu\text{m}$ , also lower on request and with electropolished surface



# QUALITY PLUS FLEXIBILITY.

## The advantages of Dockweiler hoses at a glance.

### MVQ1

Platinum-cured silicone, braid-reinforced



### MVQ2

Platinum-cured silicone, braid-reinforced, with stainless steel wire reinforcement



#### Construction

Made of high purity silicone, inside and out. High-heat resistant braid insert.

#### Applications

Suitable for pharmaceutical, biotech, cosmetic, and food applications, even at high temperatures (injection products, blood plasma, high purity water, and liquid foodstuffs). Not suitable for vacuum applications.

#### Available sizes

1/4" - 2", other sizes as required

#### Maximum length

25 m, from a diameter of 25 mm 10 m only

#### Temperature range

- 60° to + 180°C

#### Cleaning options

CIP product, sterilizable with steam (40 min, 3 bar at 124°C) or radiation, autoclavable

#### Conformity

FDA 21 CFR - 177 2600, BgVV Type II, USP class VI, USP Physicochemical 661, Cytotoxicity, Hemolysis, European Pharmacopeia 3.1.9.

#### Construction

Made of high purity silicone, inside and out, platinum-cured. High-heat resistant braid insert, reinforced with stainless steel wire spiral.

#### Applications

Suitable for pharmaceutical, biotech, cosmetic, and food applications even at high temperatures (injection products, blood plasma, high purity water, and liquid foodstuffs).

#### Available sizes

1/2" - 2", other sizes as required

#### Maximum length

5.7 m

#### Temperature range

- 60° to + 180°C

#### Cleaning options

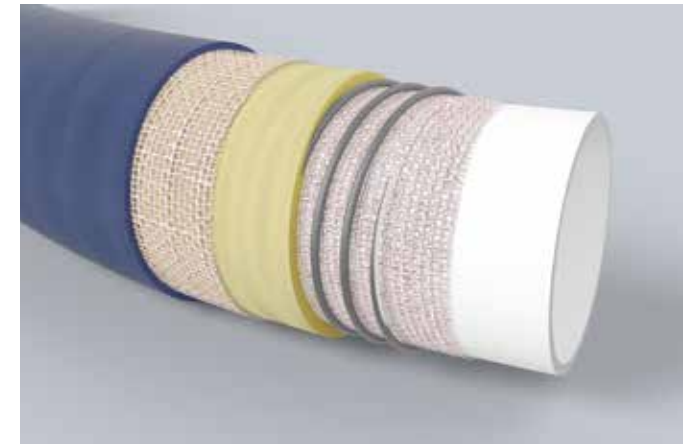
CIP product, sterilizable with steam (40 min, 3 bar at 124°C) or radiation, autoclavable

#### Conformity

FDA 21 CFR - 177 2600, BgVV Type II, USP class VI, USP Physicochemical 661, Cytotoxicity, Hemolysis, European Pharmacopeia 3.1.9.

### EPDM

Braid-reinforced with stainless steel wire reinforcement, outside blue EPDM, inside food-grade white EPDM



#### Construction

Inside white food-grade EPDM, outside blue EPDM plastic, fabric- and stainless steel wire- reinforced.

#### Applications

All food applications, including in the high temperature range

#### Available sizes

3/4" - 2", other sizes as required

#### Maximum length

10 m

#### Temperature range

- 30° to + 120°C

#### Cleaning options

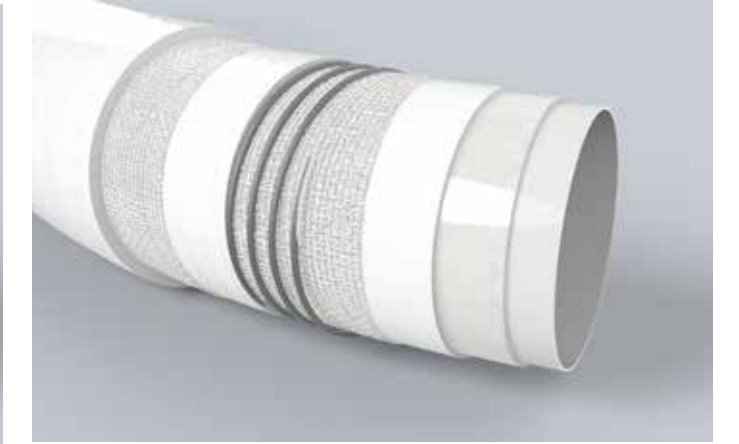
CIP product, sterilizable with steam (40 min, 3 bar at 124°C) or radiation, autoclavable

#### Conformity

FDA 21CFR - 177 2600, BgVV Type II, USP Physicochemical 661

### PFA1

PFA liner (white), braid-reinforced with stainless steel wire reinforcement, outside platinum-cured silicone



#### Construction

Inside smooth PFA, outside high purity, platinum-cured silicone. High-heat resistant braid insert, reinforced with stainless steel wire spiral.

#### Applications

Suitable for transporting food, chemical, cosmetic, pharmaceutical, and biotech products.

Excellent thermal properties, even with very aggressive media. Avoids risk of degradation and product contamination.

Very resistant to repeated dynamic processes. Frequently used in dosing and filling systems.

#### Available sizes

1/2" - 2", other sizes as required

#### Maximum length

5.7 m

#### Temperature range

- 30° to + 130°C

#### Cleaning options

CIP product, sterilizable with steam (135°C for max. 30 min)

#### Conformity

FDA 21 P 177-1550 - USP Physicochemical 661, Cytotoxicity test, Hemolysis, USP class VI

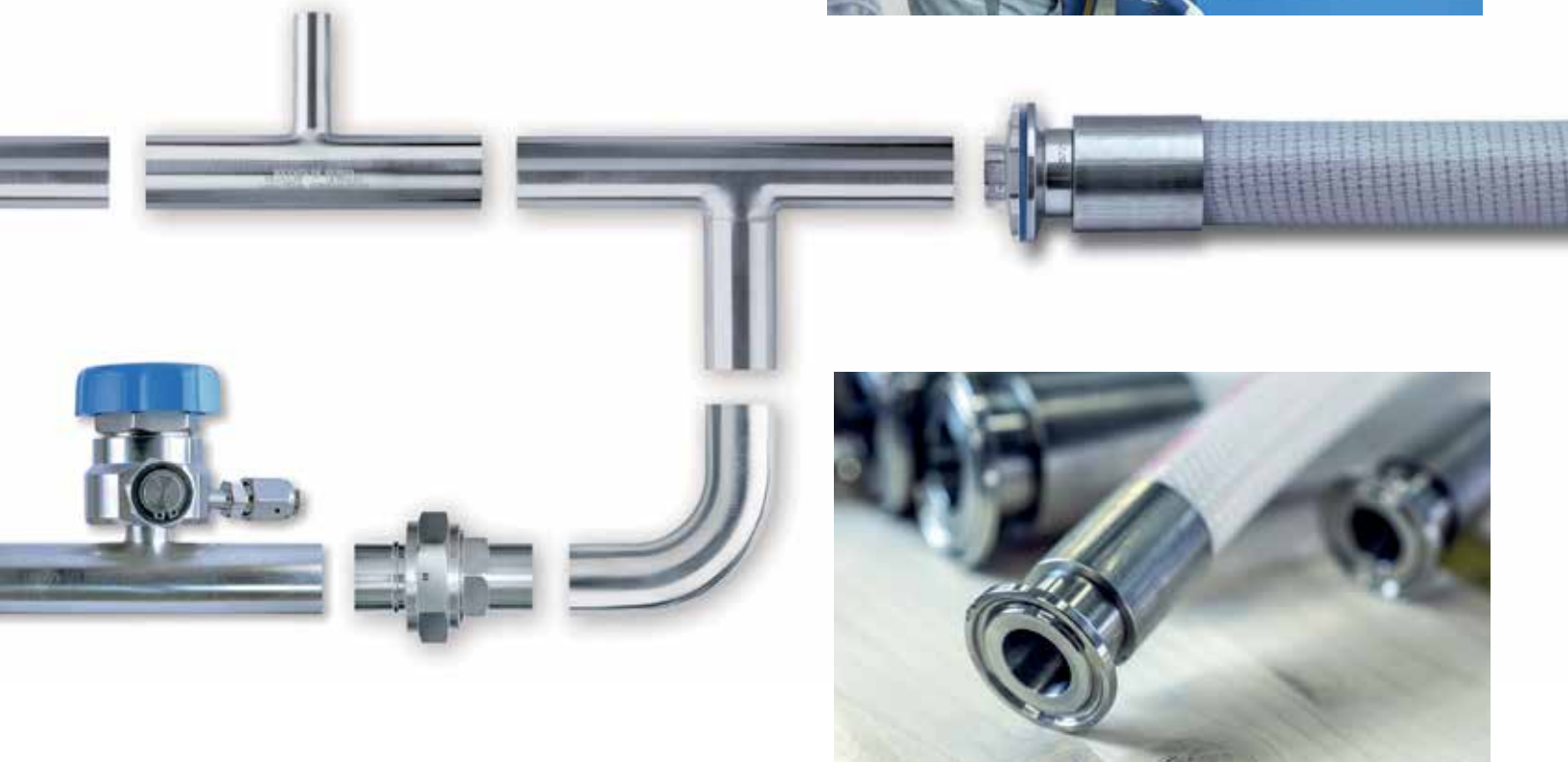
# ONE OF MANY SPECIAL SOLUTIONS.

Dockweiler's custom production makes it possible.

## INSPIRED BY FLOW – FOR MORE THAN 60 YEARS

For over 60 years now, Dockweiler has been a leading manufacturer of stainless steel tube systems. The company is known around the world for the highest standards of quality: in tube systems, in advice, and in customer service.

Dockweiler is now offering rubber hoses that meet the same high standards to the pharmaceutical and biotech industries.

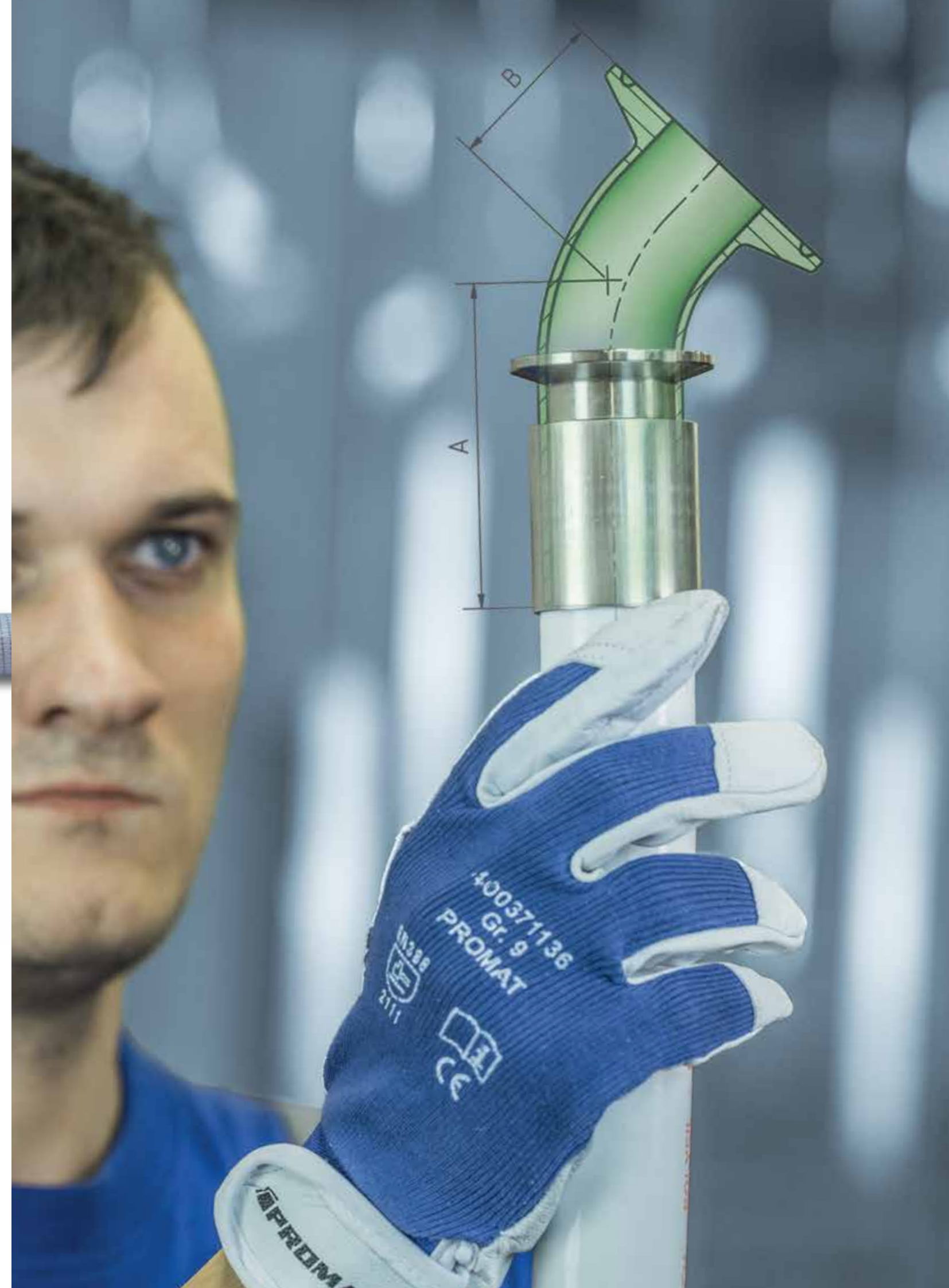


## EVERY HOSE IS UNIQUE

When it comes to pharmaceutical hose lines, Dockweiler does not produce any standard items. We tailor each hose to the customer's specific requirements. We can also easily adapt the entire tube system to ensure maximum process reliability and eliminate dead space.

## CUSTOM ADAPTATION AS STANDARD

In addition to the four standard connections, Dockweiler offers every option for adapting systems to fit specific processing equipment. Whether you need specific angles, reducers or even complex manifolds, Dockweiler can create whatever tube system you want – and always to the strictest standards of hygiene.



Contact information

**Dockweiler AG**

An der Autobahn 10/20  
19306 Neustadt-Glewe  
Germany

Tel.: + 49 38757 58 0

Fax: + 49 38757 58 222

E-Mail: [sales@dockweiler.com](mailto:sales@dockweiler.com)

Internet: [www.dockweiler.com](http://www.dockweiler.com)

